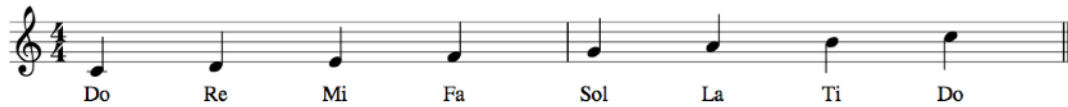


Solfège Intro

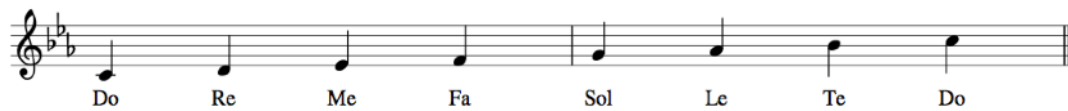
Solfège is a system wherein musical pitches are assigned syllables to aid in identifying and mentally “hearing” music without the aid of a separate instrument.

Note: We will be using the “moveable do” system to more easily apply these concepts to any key.

The pitches of a **major** scale use the following syllables:

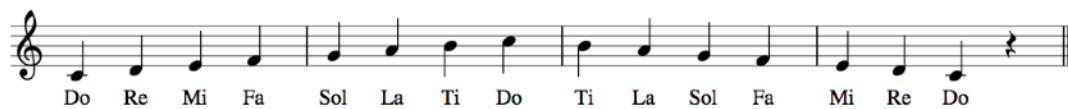


The pitches of a **minor** scale use the following syllables:



The first step is to commit these syllables and their associated pitch degrees to memory – “Do” always refers to the first scale degree, “Fa” to the fourth scale degree, etc. To aid in this process, try playing a major or minor scale ascending and descending while singing the solfège syllables.

Major



Minor



Once you feel comfortable singing and playing up and down the scale, try doing the same but without playing your instrument. If your pitches start to fluctuate, return to playing and singing to correct your vocal tuning.

Now start singing little melodies of three to four notes within the scale, just moving one step at a time, down or up. Here are two examples in major and two in minor:

Ex. 1 (major) Ex. 2 (major) Ex. 3 (minor) Ex. 4 (minor)

Do Re Mi Re Sol La Sol Fa Do Te Le Te Fa Me Re Do

After singing short linear phrases, spend some time getting to know how different intervals sound. To keep things simple at the beginning, start and end with "Do".

Major

M2 M3 P4 P5 M6 M7 P8

Do Re Do Do Mi Do Do Fa Do Do Sol Do Do La Do Do Ti Do Do Do Do

Minor

M2 m3 P4 P5 m6 m7 P8

Do Re Do Do Me Do Do Fa Do Do Sol Do Do Le Do Do Ti Do Do Do Do

Now, try singing basic triads in major and minor. Go slowly and spend time listening to each chord as you sing the arpeggio.

Major Minor

Do Mi Sol Do Re Fa La Re Mi Sol Ti Mi Do Me Sol Do Re Fa Le Re Mi Sol Te Mi

This should get you started! Try to sing melodies from your favorite literature using your new skills, and try using solfege while you improvise!